

Dimension sheet for REFLECTA/2 and by-pass

A (Thickness of deck and foundation¹)

 mm

B (Height of wheelhouse)

 mm

C (Thickness of platform)

 mm

F (Ceiling)

 mm

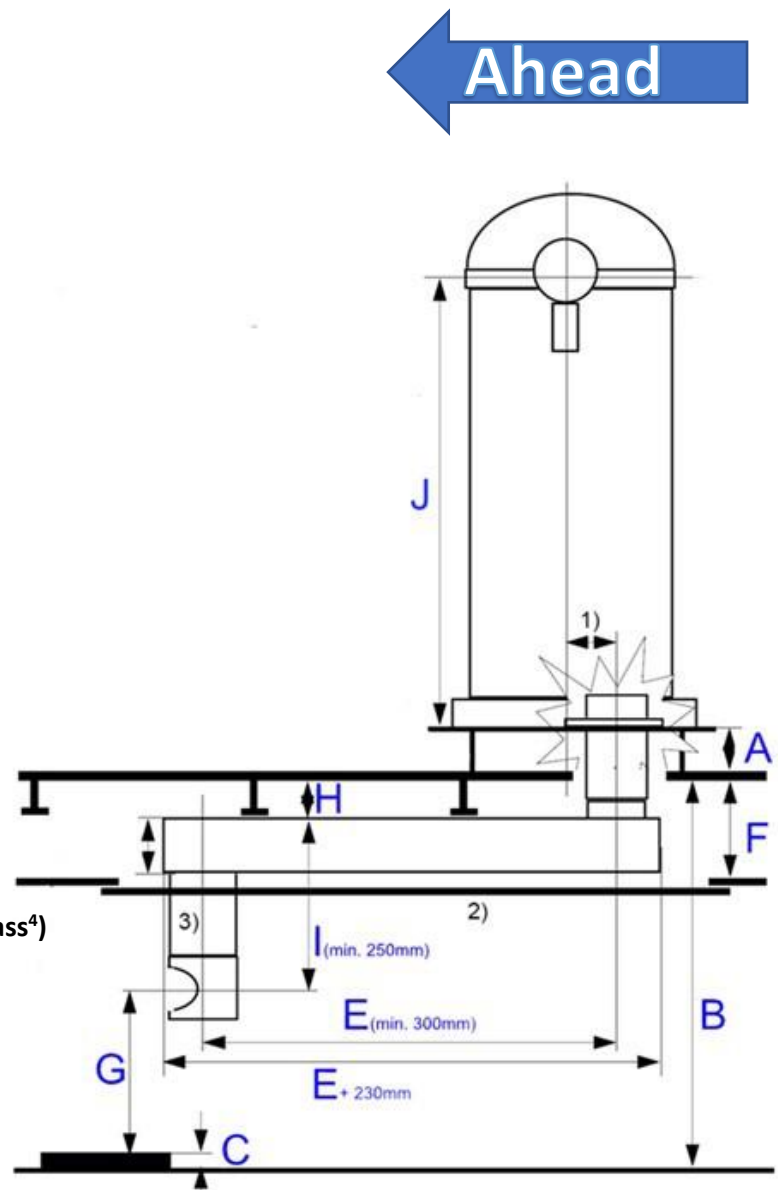
G (Height of reflection mirror²)

 Mm

E (Horizontal length of by-pass³)

 mm

H (Distance roof of wheelhouse to by-pass⁴)

 mm


J (Cardheight above base)

- 910mm
- 1,200mm (Standard)**
- 1800mm

Ship's MAIN voltage

- 24V 115V 230V

Ship's EMERGENCY voltage

- 24V 115V 230V

¹ Foundation supplied by yard

² Height of eye + 100mm (without specification = 1,800mm)

³ Maximum optical way (A+H+E+I) = 7,000mm